

## TURKISH FLEET.

### MEDJIDIEH (1903), & ABDUL HAMID (1904).

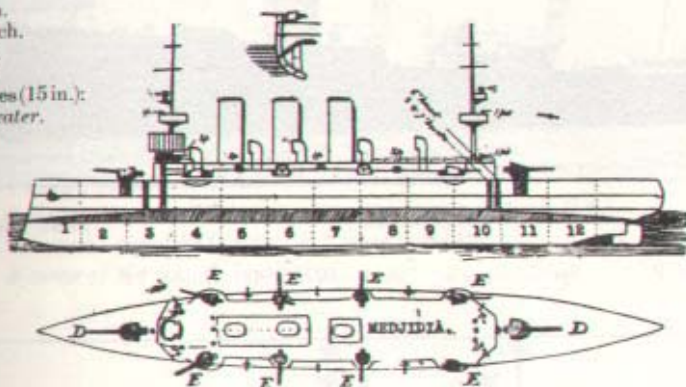
Displacement 3277 tons. Complement 302.

Length, 330 feet. Beam, 42 feet. *Maximum* draught, 15½ feet.

**Guns:**

2—6 inch.  
6—4 7/8 inch.  
2—3 pdr.  
2—1 pdr.

**Torpedo tubes (15 in.):**  
3 above water.



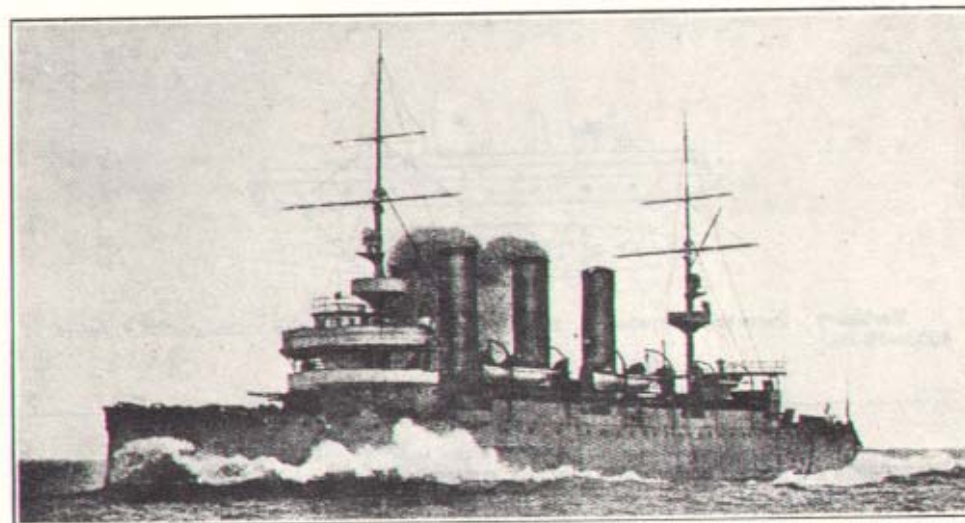
**Armour:**  
2<sup>nd</sup> Deck.....

**Machinery:** 2 sets 4 cylinder triple expansion. 2 screws. Boilers: *Medjidieh*, 16 Niclausse. Designed I.H.P. 12,000 = 22 kts. (*forced draught*) (190 revs.). Coal - *normal* 275 tons; *maximum* 600 tons. *Abdul Hamid* on trial did 22.25 kts. on measured mile, and 21.1 kts. *mean* speed 6 hours trial at N.D.

**Gunnery Notes.**—Hoists for 4-7's are three in a row abreast end guns.

**Torpedo Notes.**—Position of torpedo tubes uncertain, *probably* in section 3.

**Engineering Notes.** Heating surface 27,882 square feet, grate surface 775 square feet. Steam pressure 275 lbs. Screws 3-bladed. The full coal supply immerses the ship 12 in. more.



*Signal letter for class:* M.

ABDUL HAMID.

**Differences.**—*Medjidieh* (MA) has higher ventilators than *Abdul Hamid* (MB).