

GREEK BATTLESHIPS.

**PERA** (1890), **SPETSAI** (1899), **HYDRA** (1889).

[Reconstructed at La Seyne: *Pera* (1897); *Spetsai* and *Hydra* (1899-1900).

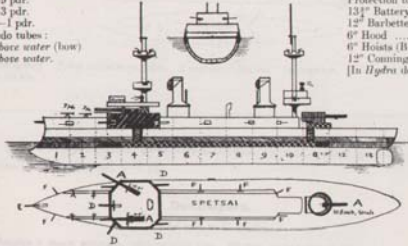
Displacement 2000 tons. Complement 440.

Length, 331 feet. Beam, 52 feet. Maximum draught, 24 feet.

**Guns (Canon):**  
 2—10 8 inch, 36 cal.  
 1—10 8 inch, 30 cal.  
 5—6 inch, 45 cal.  
 1—4 inch, 50 cal.  
 8—3 pdr.  
 4—3 pdr.  
 12—1 pdr.

**Torpedo tubes:**  
 1 above center (bow)  
 2 above center.

**Armour (Cement steel):**  
 12"–14" Belt (lower)..... a-d  
 3" Belt (upper)..... e  
 [Cellulose behind belt].  
 2½" Deck (flat).....  
 Protection to vitals..... a-d  
 13½" Battery redoubt..... a-d  
 12" Barbette (aft)..... a  
 6" Hood..... d  
 6" Hoists (11 guns)..... d  
 12" Conning tower..... a  
 [In *Hydra* deck is 2" only].

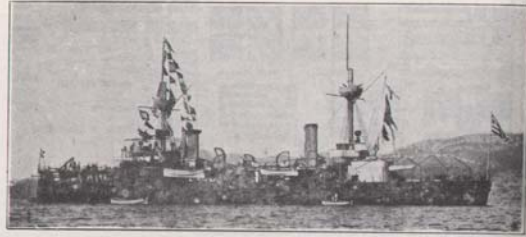


**Machinery:** 2 sets vertical triple expansion. 2 screws. Boilers: cylindrical. Designed H.P. 6700=17 kts. (on trial, 1890-1891, this was slightly exceeded). Present speeds: circa 12 kts. or less. Coal: normal 400 tons; maximum 600 tons.

**Armour Notes.**—The belt is 4 feet wide under water. The upper belt is the same width. The guns have flat shields to them, about 2" thick.

3 armoured cruisers and some torpedo craft are projected.

There are 20 old torpedo boats of no present fighting value; also a few old gun boats.



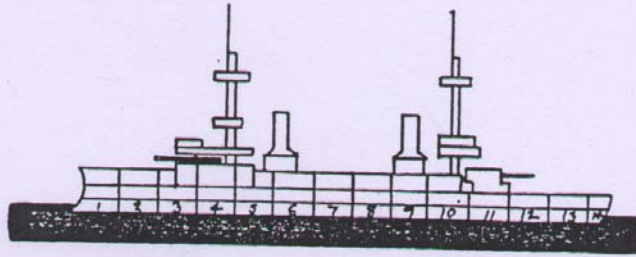
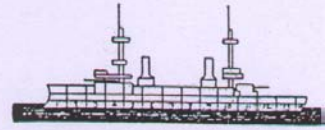
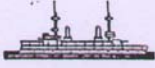
HYDRA. Photo, Bar.

(Spetsai identical except she has no steam pipe before fore funnel).

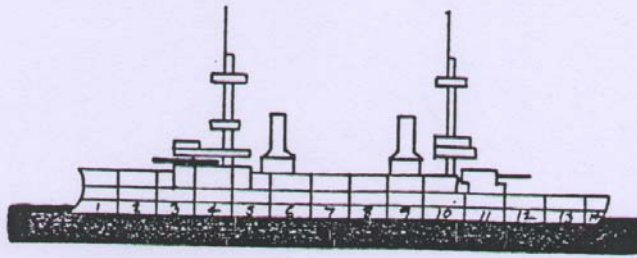
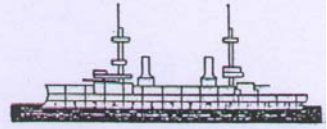
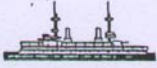


PERA. Photo, Symonds.

PSARA



SPETSAI



HYDRA

